

Fast, Reliable, Affordable

Expanded Human T & NK Cells

ready-to-use cells delivered in **3 DAYS**

From HK\$2340/4M cells



Allegrow Expanded Cells

- ✓ Supports drug screening, immunology, oncology, and autoimmune research
- ✓ Activated & expanded with AimGel technology for gentle, native-like stimulation
- ✓ Rapid growth, minimized exhaustion, consistent performance
- ✓ Ready-to-use consumables — skip isolation & culture steps
- ✓ Grown in our Hong Kong lab, shipped within 3 working days
- ✓ Cost-effective without compromising quality

Source & Quality Assurance

- ✓ Derived from commercial PBMCs of healthy donors
- ✓ Donors screened negative for HIV, Hepatitis B & C, CMV, and EBV
- ✓ Cryopreserved cells tested for viability, function, sterility, and mycoplasma

Allegrow Biotech

Allegrow Biotech is a biotechnology company specialising in immunomodulation through biomimetic approaches, based in HKSTP. We combine chemical and biological engineering, cell biology, and data science to develop research and clinical tools for immune cell therapy.

website www.allegrowbiotech.com
email welovecells@allegrowbiotech.com
whatsapp +852 9420 7604

LAB-A-PORTER

We are proud to have LAB-A-PORTER as our authorised distributor in Hong Kong.

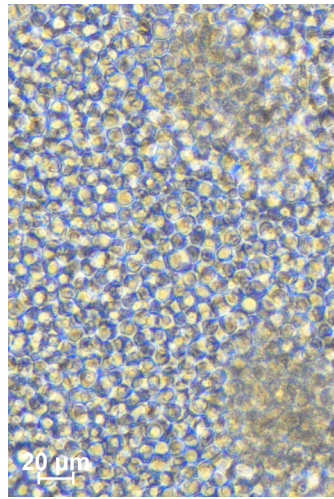
tel +852 5744 0607
email dolly@lab-a-porter.com
whatsapp +852 5744 0607
wechat LAB-A-PORTER
fax +852 3013 9564
website www.lab-a-porter.com

Expanded CD3+ pan T cells

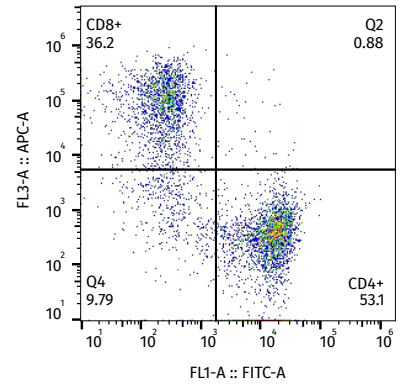
Expanded from human PBMC with AimTconv™, representing the entire T cell population, providing a broad platform for immunological studies.

Ideal for exploring general T cell activation, signaling, and drug screening assays.

Vial size	≥4M
Viability after recovery	≥80%
CD3+ %	≥90%
Price	HKD 2,340/vial



Cat No: CTC01H

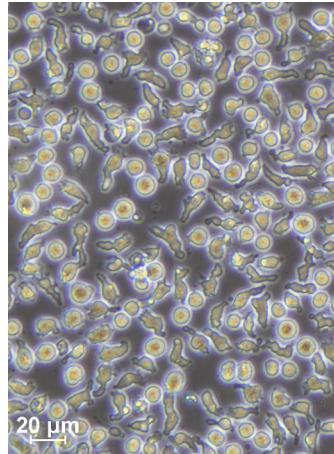


Expanded CD4+ helper T cells

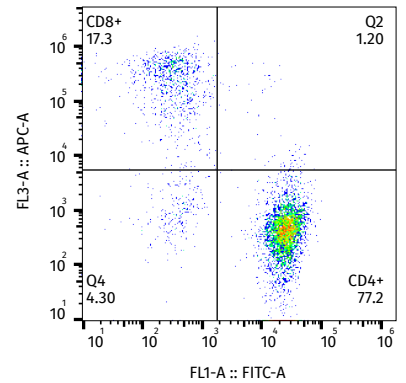
Key regulators of the immune system, orchestrating cytokine release and immune coordination.

Crucial for studying autoimmune disorders, infectious diseases, and vaccine responses.

Vial size	≥4M
Viability after recovery	≥80%
CD4+ %	≥75%
Price	HKD 2,340/vial



Cat No: CTC02H

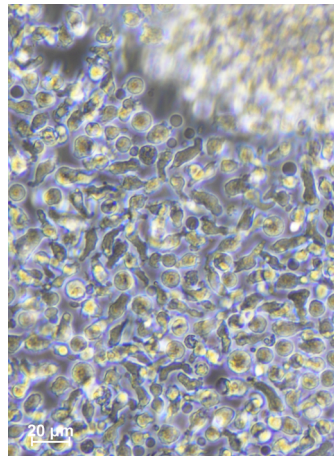


Expanded CD8+ cytotoxic T cells

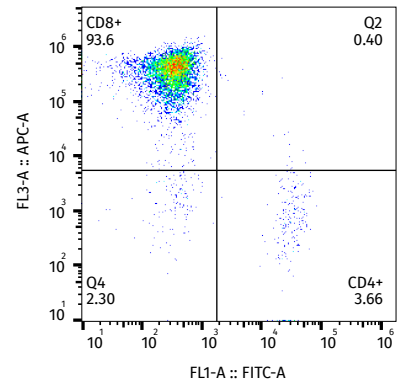
Specialized in directly killing infected or malignant cells.

Widely used in oncology, antiviral research, and immunotherapy development. A powerful tool for modeling cell-mediated cytotoxicity in vitro.

Vial size	≥4M
Viability after recovery	≥80%
CD8+ %	≥90%
Price	HKD 2,340/vial



Cat No: CTC03H

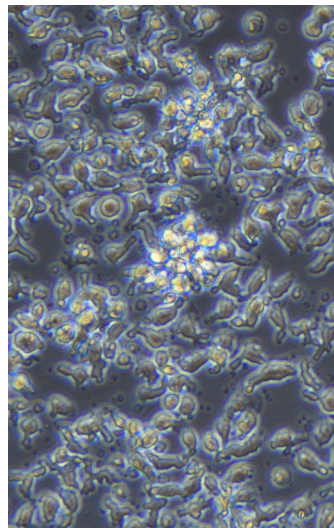


Expanded CD3-CD56+ NK cells

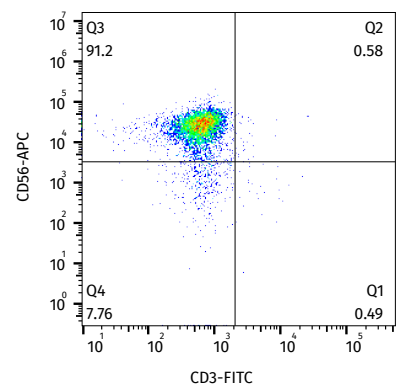
Innate immune cells with rapid, non-MHC restricted cytotoxic activity.

Valuable for research in tumor surveillance, viral infections, and immunotherapy approaches. Providing a unique lens into innate immunity and early defense mechanisms.

Vial size	≥4M
Viability after recovery	≥80%
CD56+ CD3-%	≥80%
CD56+ CD16+%	≥70%
Price	HKD 3,120/vial



Cat No: CNK01H



For laboratory research use only. Not for therapeutic, diagnostic, or consumption purposes.

Handle all human cells under BSL-2 procedures.

Negative viral assays may not fully exclude latent viral genomes.

Store vials in liquid nitrogen vapor phase, and ship in dry ice temporarily.